



Dee Elliott

Personal Real Estate Corporation

dee_elliott@yahoo.com 604.612.7798

925 ARBUTUS BAY LANE BOWEN ISLAND

MAIN HOUSE

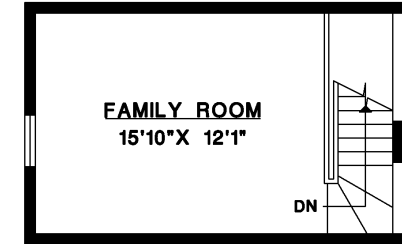
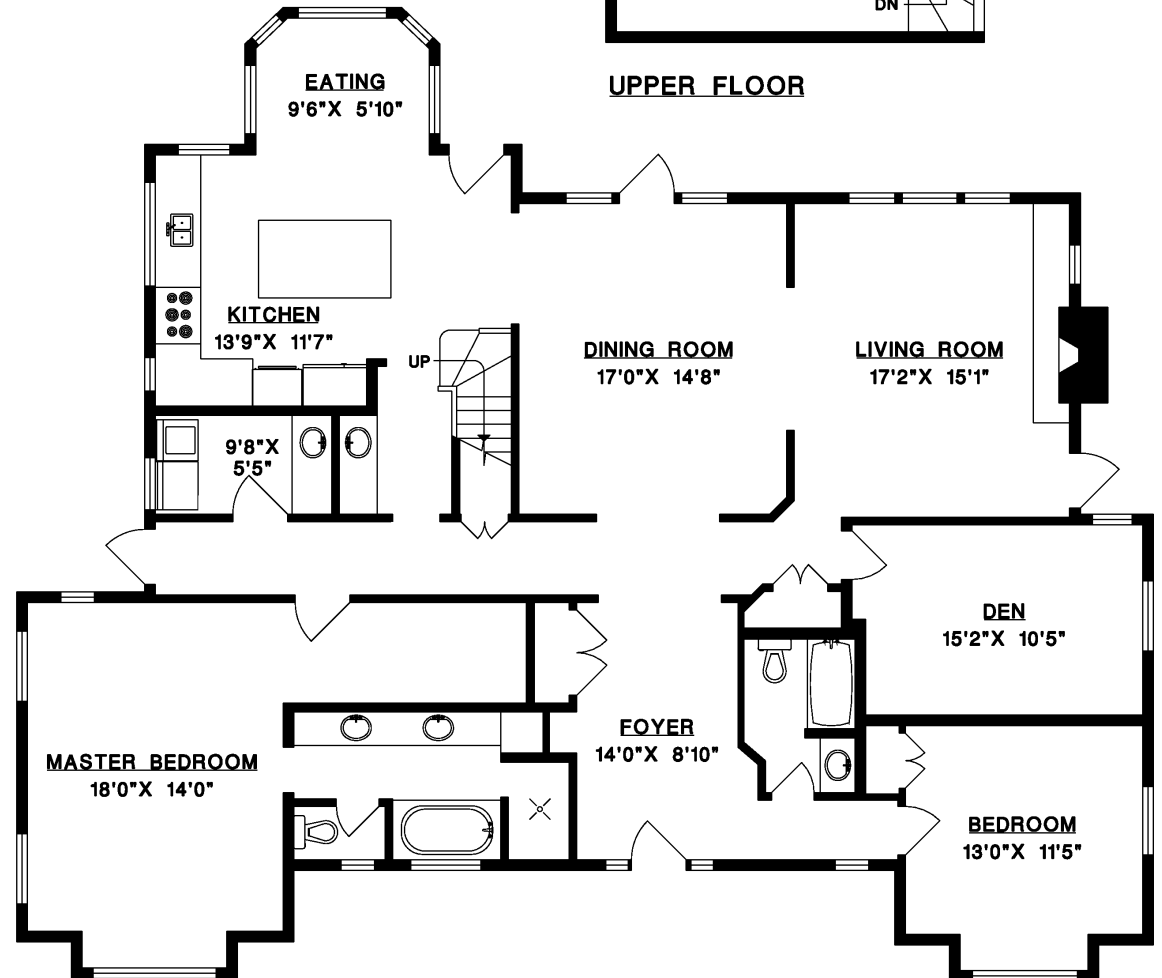
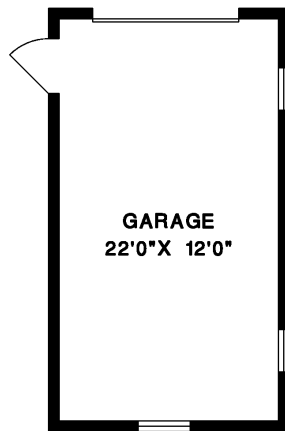
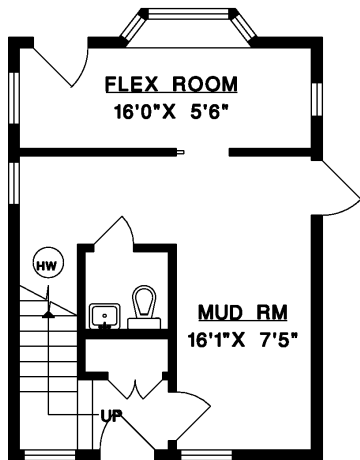
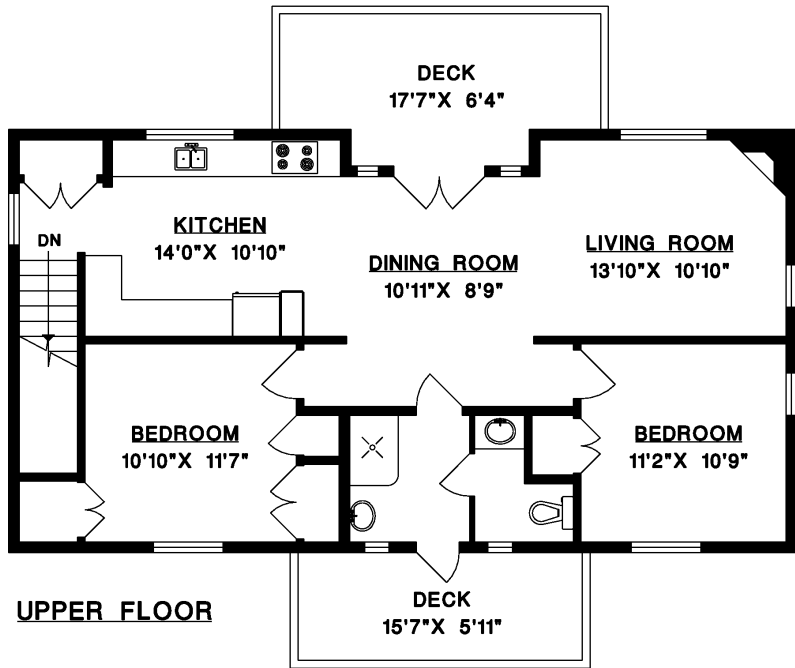
MAIN FLOOR 2,368 SQ.FT.
UPPER FLOOR 275 SQ.FT.

COACH HOUSE

UPPER FLOOR 981 SQ.FT.
LOWER FLOOR 408 SQ.FT.

TOTAL 4,032 SQ.FT.

GARAGE 305 SQ.FT.
DECKS 248 SQ.FT.



UPPER FLOOR

MAIN FLOOR